



## airtime™

### Instrument Channel Dryer

Studies indicate that there is a strong link between moisture and microbe colonization in endoscope and instrument channels. Endoscope drying and surgical instrument channel drying is crucial to patient safety and infection prevention. The Airtime Channel Dryer aids in drying endoscope channels and also surgical instrument channels. It can be used as an alternative to, or along with a drying cabinet. The unit allows scope channels to be dried quickly, reducing the risk that the endoscope will be stored, or put into immediate use, with wet channels.

For more information about endoscope reprocessing: AAMI ST91 / SGNA / AORN / CDC

**Two channel dryer models are available, Variable Flow Rate Unit (VFR100) and External Air Supply Unit (ATEAS01).**

### Introducing the Airtime Variable Flow Rate Unit (VFR100)

The Airtime Variable Flow Rate Unit (VFR100) automatically adjusts airflow, maximizing the amount of air fed into endoscope channels, without the risk of overpressurizing the instrument.

By continuously monitoring instrument channel pressure, VFR100 will increase or decrease airflow based on the instrument manufacturer's PSI rating.

This process not only protects valuable instruments, it also minimizes endoscope and instrument drying times. Drying cycles are automatically and immediately shut off in the event

#### VFR100 Features:

- Two independent pumps per unit.
- Independent timers for each pump.
- Air filtered to the level of Instrument Air (.01µm)
- Adapter and tubing sets for Olympus, Fuji, and Pentax endoscopes.
- Adapter and tubing sets for small diameter scopes, savy dilators, and robotic arms.
- Various workstation options; Counterstand, IV Pole, Customized Wall Rail Systems
- Built with Quiet Motor Technology.

of a clogged or collapsed instrument or endoscope channel.

## Airtime External Air Supply (ATEAS01)

The Airtime ATEAS01 is a pumpless channel dryer that utilizes the facility's wall supplied Instrument Air. Air flow and channel pressure are continuously monitored throughout the drying cycle, preventing overpressure in delicate instrument or endoscope channels. Instrument PSI sensor settings and drying cycle times are managed with two independent touch screens.

The extreme dryness of Instrument Air (-40 F) helps reduce overall instrument and endoscope drying times. The two air filters at the base of the ATEAS01 unit provide added .01 micron filtration prior to the air entering the instrument. This ensures that any particles that may have been trapped in the facilities airlines will not reach the instrument.



**Variable Flow Rate Dryer (VFR100) shown here on Counter Stand.**



**Independent timers for each pump.**



**External Air Supply Dryer (ATEAS01) shown on Wall Rail.**



## Adapters & Tubing

Airtime tubing and adapter sets provide maximum flow rate and reduced drying times for a variety of instrument and endoscope types. To reduce the risk of cross-contamination between instruments, tubing sets are changed monthly, and adapter sets are changed after each use.

**Compatible with Olympus, Pentax, Fuji, Storz, ACMI, and Intuitive Surgical. Ask your Cygnus Rep for detailed adapter and tubing information.**

[INSTALLATION OPTIONS](#)

[REQUEST MORE INFORMATION](#)

SKU	DESCRIPTION	SIZE	UNITS/CASE
<b>Airtime Controllers</b>			
VFR100	Airtime™ Endoscope and Instrument Channel Dryer Variable Flow Rate Unit. Includes a power supply and filters.	6" W x 10" H 3.25" D	1
ATEAS01	Airtime™ Endoscope and Instrument Channel Dryer External Air Supply. Includes a power supply and filters.	6" W x 10" H 3.25" D	1
APS06	Power Supply for Airtime Unit	N/A	1
<b>Adapter Sets</b>			
ASO3	Olympus – Air/Water Valve Port Adapter, Suction Valve Port Cap, Biopsy Port Cap, Auxiliary Water Jet Port Adapter, & Suction Port Tube Adapter.	Olympus Gastrosopes Colonoscopes	120 sets
ASO3D	Olympus – Air/Water Valve Port Adapter, 2nd Biopsy Port Adapter, Suction Valve Port Cap, Biopsy Port Cap, Auxiliary Water Jet Port Adapter, & Suction Port Tube Adapter.	Olympus Duodenoscopes (ERCP) Endoscopes	100 sets
ASO3E	Olympus – Air/Water Valve Port Adapter, Elevator Rinse Port Adapter, Suction Valve Port Cap, Biopsy Port Cap, Auxiliary Water Jet Port Adapter, & Suction Port Tube Adapter.	Olympus Dual Channel Endoscopes	100 sets
ASO4	Olympus – Suction Port Cap, Air/Water Port Cap, & Biopsy Port Cap.	Olympus Flexible Endoscopes	120 sets
ASO5E	Olympus – Air/Water Valve Port Adapter, Elevator Rinse Port Adapter, Suction Valve Port Cap, Biopsy Port LL Cap, & Suction Port Tube Adapter. Olympus – Suction Port Cap, Air/Water Port Cap, & Biopsy Port Cap.	Olympus Ultrasound (EUS) Linear Endoscopes	100 sets
ASO6E	Olympus – Air/Water Valve Port Adapter, Balloon Port Adapter, Suction Valve Port Cap, Biopsy Port Cap, Auxiliary Water Jet Port Adapter, & Suction Port Tube Adapter.	Olympus Ultrasound (EUS) Radial Endoscopes	100 sets
ASOB1	Olympus – Suction Valve Port Adapter & Biopsy Port Adapter	Olympus Bronchoscopes	100 sets

ASOEB	Olympus – Suction Valve Port Adapter, Biopsy Port Adapter, & Balloon Port Adapter	Olympus Ultrasound (EBUS) Bronchoscopes	100 sets
ASP2	Pentax – Air/Water Valve Port Adapter, Suction Valve Port Cap, Biopsy Port Cap, Auxiliary Water Jet Port Adapter, & Suction Port Tube Adapter.	Pentax Gastrosopes Colonoscopes	120 sets
ASF2	Fuji – Air/Water Valve Port Adapter, Suction Valve Port Cap, Biopsy Port Cap, Auxiliary Water Jet Port Adapter, & Suction Port Tube Adapter.	Fuji Gastrosopes Colonoscopes	120 sets
ASF7	Fuji – <b>for use with Fuji 700 Series Scopes</b> – Air/Water Valve Port Adapter, Suction Valve Port Cap, Biopsy Port Cap, Auxiliary Water Jet Port Adapter, & Suction Port Tube Adapter.	Fuji 700 Series Gastrosopes Colonoscopes	120 sets
ASOB1	Adapter Set for Olympus bronchoscopes, includes 1 Suction Port Adapter & 1 Biopsy Port Adapter.	For use with Olympus bronchoscopes	100 sets
ST14G	Needle nose, small diameter channel adapter. Commonly used with Savary Dilators and other small diameter instruments.	For use with small diameter instruments.	250 adapters
LL01-01	Luer Lock Adapter and Luer Lock Cap (individually packaged pairs), 1 adapter/cap pair per bag, 100 bags per case. 100 pairs total.	For use with small diameter instruments.	100 pairs
LL01-25	Luer Lock Adapter with Luer Lock Cap (bulk packaged pairs, 25 adapter/cap pairs per bag, 4 bags per case. 100 pairs total.	For use with small diameter instruments.	100 pairs
LL02-01	Luer Lock Adapter and Suction Tube Adapter (individually packaged pairs), 1 luer lock/suction tube pair per bag, 100 bags per case. 100 pairs total.	For use with small diameter instruments.	100 pairs
LL02-25	Luer Lock Adapter and Suction Tube Adapter (bulk packaged pairs), 25 luer lock/suction tube pairs per bag, 4 bags per case. 100 pairs total.	For use with small diameter instruments.	100 pairs
<b>Tubing Sets</b>			
DF100X	Airtime™ Directional Flow Tubing Set. 3 tubing ports.	Universal with appropriate adapters.	20
DF400Z	Airtime™ Directional Flow Tubing Set. 4 tubing ports.	Universal with appropriate adapters.	10
HDF200X	Airtime™ Horizontal Drying, Directional Flow Tubing Set. Used for drying coiled scopes. 3 tubing ports.	Universal with appropriate adapters.	20
HDF400Z	Airtime™ Horizontal Drying, Directional Flow Tubing Set. Used for drying coiled	Universal with appropriate adapters.	10

	scopes. 4 tubing ports.		
SDT01	Airtime™ Small Diameter Scope Tubing Set, single-line. Two tubing sets per unit.	N/A	5
SDT02	Airtime™ Small Diameter Scope Tubing Set, dual-line. Two tubing sets with Y connector per unit.	N/A	5
SDT03	Airtime™ Small Diameter Scope Tubing Set, dual-line. Two tubing sets with straight-line adapter fitting.	N/A	5
<b>Filters</b>			
FLT-Y30	Airtime™ HEPA Filter Assembly Set, .010 µm right angle connector	N/A	2
FLT-Y40ST	Airtime™ HEPA Filter Assembly Set, .010 µm straight line connector	N/A	2
<b>IV Pole Installation</b>			
IV500	Airtime™ IV Pole Set includes: 1 cradle bar, 2 height reduction bars, 1 mounting bracket and 1 IV pole.	N/A	1
<b>Counter Stand Installation</b>			
CS9179	Airtime™ Counter Stand with Universal Mounting Bracket	9" W x 17" H x 9" D	1
<b>Wall installation</b>			
WRC100	<b>Airtime™ 12" Wall Rail Mounting System</b> , used to mount one Airtime Control Unit. Includes: one – 12" Wall Rail, two – End Caps, 2 – Wall Anchors, one – Universal Bracket.	12" Rail	1
WRC200	<b>Airtime™ 24" Wall Rail Mounting System</b> , used to mount two Airtime Control Units. Includes: one – 24" Wall Rail, two – End Caps, two – Wall Anchors, two – Universal Brackets.	24" Rail	1
WRC300	<b>Airtime™ 36" Wall Rail Mounting System</b> , used to mount Airtime Control Units or flexible endoscopes. Includes: one – 36" Wall Rail, two – End Caps, three – Wall Anchors, three – Universal Brackets, two – Positioning Bars.	36" Rail	1
WRC500	<b>Airtime™ Complete Wall Rail Mounting System – The system will hold two scopes and one Airtime Control Unit.</b> Includes: one – 12" Wall Rail, three – 36" Wall Rails, eight – End Caps, eleven – Wall Anchors, seven – Universal Brackets, six – Positioning Bars. Proper installation requires wall space that is 3' 6" wide by 80" high. The positioning bars are used for holding the scope and for height reduction.	12" Rail & 36" Rails	1



## First Step Endoscopic Bedside Kits

**Immediate bedside cleaning.** The First Step Bedside Kit simplifies the endoscope cleaning process, and provides the supplies needed to prevent bioburden from drying and solidifying in endoscope channels. Available in Ready-to-Use and Add Water Kits.

- **100% compliant with SGNA and manufacturers' guidelines.**
- **Safe for use on all flexible endoscopes.**
- **Available with a variety of cleaning pad options.**
- **First Step Pouches are user-friendly and space-efficient.**
- **Ensures the proper dilution of enzymatic detergent.**
- **Available in 100 ml, 200 ml and 500 ml sizes.**

All First Step Kits contain Simple2™ Multi-Tiered Enzymatic Detergent. Simple2 effectively dissolves blood, fat, tissue, protein and other forms of organic material. Simple2 is low-foaming, non-toxic, non-corrosive, latex-free, neutral pH and safe to use on all flexible endoscopes.

### Ready-to-Use Kits

Convenience of use increases staff compliance and turnover time. The ready-to-use detergent ensures a properly mixed formula every time. The combined effect is 100% compliance, 100% of the time. Includes ready-to-use Simple2 Enzymatic Detergent and an endoscopic cleaning pad.



SKU	READY-TO-USE KITS	CLEANING PAD	SIZE	UNITS/CASE
EP-3	First Step Bedside Kit – Stand-Up Pouch   <b>intended for small diameter scopes in SPD only</b>	1 Endoscopic Cleaning Pad	100 ml	100
EP-4	First Step Bedside Kit – Stand-Up Pouch	1 Endoscopic Cleaning Pad	200 ml	70
EP-4B	First Step Bedside Kit Stand-Up Pouch / Button Brush	1 Endoscopic Cleaning Pad 1 Button Brush	200 ml	70
EP-4G	First Step Bedside Kit – Stand-Up Pouch	2 Gemini™ Cleaning Pads	200 ml	70
EP-6	First Step Bedside Kit – Stand-Up Pouch	1 Endoscopic Cleaning Pad	500 ml	30

## Add Water Kits

Add water to the Kit when you are ready to use it. The concentrated detergent can be diluted in the pouch, no additional mixing container is required. The Add Water Kit maximizes storage space and reduces freight costs. Includes concentrated Simple2 Enzymatic Detergent and an endoscopic cleaning pad in a resealable stand-up pouch.



Before Water    Water Added

**The Add Water Kit maximizes storage space and reduces freight costs.**



**500 ML  
EP-6W**

SKU	ADD WATER KIT	CLEANING PAD	SIZE	UNITS/CASE
EP-6W	First Step Bedside Add Water Kit Resealable Stand-Up Pouch	1 Endoscopic Cleaning Pad	500 ml	120

## First Step Kit Holders and Wall Racks

Tabletop Kit Holders are available in 2 sizes. They provide a stable base for First Step Kits. The First Step Wall Rack stores Kits in a convenient location in the work area.



**Order#: FS94**  
**Size: 9" x 4"**



**Order#: FS74**  
**Size: 7" x 4"**

**Keep First Step Kits  
Within Reach.**



**Order#: WR95M**  
**Size: 12" h x 7" w x 7" d**

----CYGNUS HOME PAGE----





## NOW AVAILABLE WATER QUALITY KITS.

TEMPERATURE COMPENSATION  
IS AUTOMATIC.



Water Conductivity  
Monitor Controller



Connect to Valves or  
Custom Alarm Systems  
RMR Remote Relay



Hy-Lite  
Product Series



Great Deals on  
**PARTS**

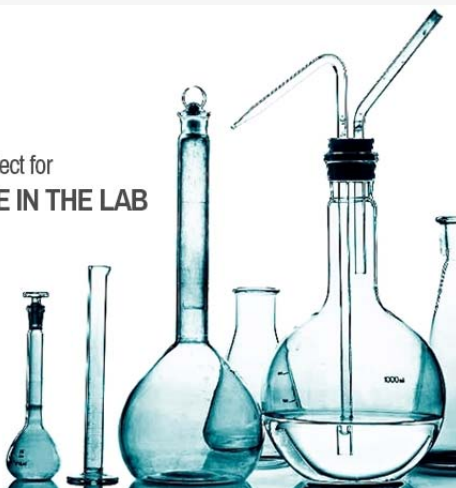
[SEE ACCESSORIES](#)



Will work with your  
**DI and Reverse Osmosis**  
applications



Perfect for  
**USE IN THE LAB**



**FREE QUOTES**



We can provide fast, free quotes  
for all product requests

**CALL US TODAY!**



Hy-Lite Series Remote Relay RMR – 100 Feet  
\$165.00



Hy-Lite Series Alarmed Water Quality Indicator With Remote Relay HLA-200K With RMR – 50 Feet  
\$273.00



Hy-Lite Series Silent Water Quality Indicator With Audible Remote Alarm HLS-200K With RMA – 50 Feet  
\$260.00



Hy-Lite Series Alarmed Water Quality Indicator With Remote Relay HLA-1Meg With RMR – 50 Feet  
\$273.00

## BLOG UPDATES



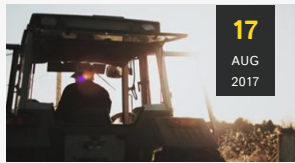
16

OCT  
2017

Hydro-Check Systems Inc.

### TOKYO 2020: PURIFYING ODAIBA MARINE PARK

While the upcoming Olympic games in Tokyo are still far off in the minds of many, the ...



17

AUG  
2017

Hydro-Check Systems Inc.

### THE DEAD ZONE IN THE GULF PART 2: FINDING THE REMEDY

The scientists involved in recording history's largest known dead zone are making waves in their effort to ...



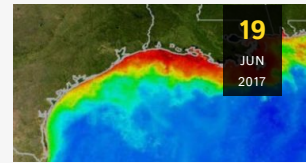
11

JUL  
2017

Hydro-Check Systems Inc.

### MINNESOTA'S AGRICULTURAL WATER QUALITY PROGRAM

A new water quality certification program in Minnesota is highlighting the importance of, and challenges to, reducing ...



19

JUN  
2017

Hydro-Check Systems Inc.

### THE DEAD ZONE IN THE GULF OF MEXICO PART 1: THE CURRENT SITUATION

After recording a record-breaking dead zone in the Gulf of Mexico this week, scientists have shed light ...



## ✉ SIGN UP FOR NEWSLETTER

Stay informed on recent products and specials.

Subscribe

Since 1996, we have been servicing the water quality industry with original products, accurate instruments and personalized customer care.

### TOP RATED PRODUCTS



414 Series Resistivity Cell / Sensor CS10S 25 feet  
★★★★★  
\$271.00



Hy-Lite Series Remote Alarm with Re-Alarm RMAR -200 feet  
★★★★★  
\$184.00

### PRODUCT & HELP SECTIONS

- ▶ Water Quality Indicators
- ▶ Resistivity Monitor
- ▶ Conductivity Monitor
- ▶ What is C&R?
- ▶ FAQs
- ▶ Customer Applications

### CONTACT US

- 📍 Hydro-check Systems Inc.™  
1708 Ord Way Oceanside, CA 92056
- ☎ 760.930.1924
- ✉ adene@hydrocheck.com